

Refrigerators

13 Pages

Everything you need
to know about your
refrigerator.

4 Types + 4 Styles

Which combination is right for you?
Find out Inside.

FULL-DEPTH

VS.

COUNTER-DEPTH

Depth

Counter-depth refrigerators
are taking over. Here's why.

Bonus Section

Undercounter Refrigeration

Table of Contents

Questions Answered In This Guide:

Space: Replacing an Existing Refrigerator, or Designing a New Kitchen?	1
What Type & Style Of Refrigerator Is Best For You?	4
Counter-Depth vs. Full-Depth: How Deep Is Too Deep?	11
How Much Capacity Do You Need?	11
Ice, Water, and Dispensers: Do Need Them?	12
Which Refrigerator Features Are Important?	12
Bonus Section: What Is Undercounter Refrigeration?	13



Kieffer's Buying Guide: Refrigeration

There are important decisions to make before choosing a new refrigerator and several factors to take into account.



Space: How Much Do You Have?

When Replacing an Existing Refrigerator

Measure. All too often customers measure their existing refrigerator and use these measurements to find a replacement model. This is a huge mistake. Instead, measure the area where you want your refrigerator to rest. Be sure to measure the width, height, and depth. We've found that 1 in 5 refrigerators do not fit into their new space upon delivery due to incorrect measurements.

Write Down Your Measurements:

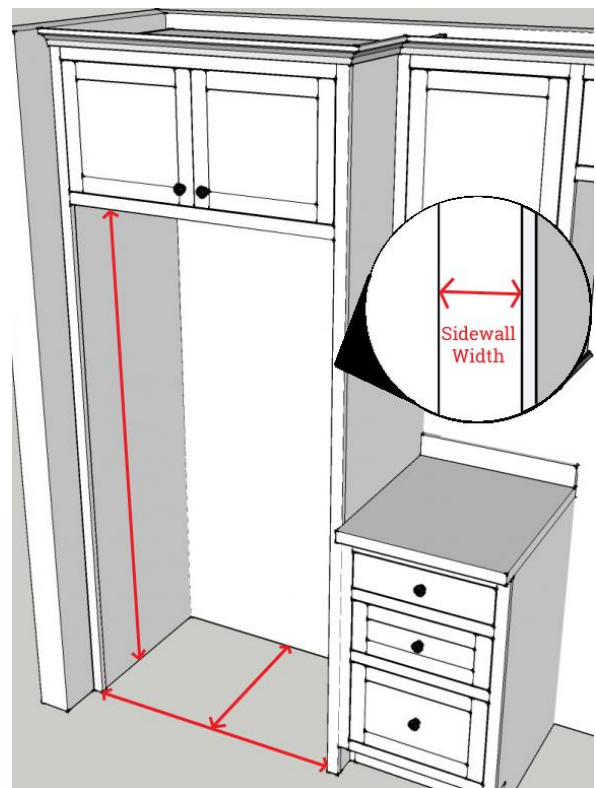
Length: _____

Width: _____

Height: _____

Sidewall Width: _____

Notes: _____



Kieffer's Buying Guide: Refrigeration

Space: How Much Do You Have?

When Replacing an Existing Refrigerator

Sometimes side walls get in the way when trying to open a refrigerator door. Manufacturers design models that open to the left or the right. Known as hinging, it's critical to decide which way you want your refrigerator doors to open. A left hinge unit opens to the left (with the handle on the right) and right hinge units open to the right (with the handle to the left). Be careful. While some refrigerator doors feature reversed hinging, other units must be ordered specifically left or right hinged. Know which direction you want your door to open and let a Kieffer's salesperson guide you to the units that meet those hinging requirements. Don't forget that refrigerator handles add depth to the unit. Be sure to account for this added depth and make sure that the handle won't hit a side wall or cabinet.

Many homes have floor molding that runs the length of the wall. Remove it before installing your new refrigerator, as it will give you an extra 0.5 – 1 inch for a more flush installation.



Designer Tip:

Depending on your refrigerator choice, you may need extra space on each side of the unit to accommodate the door when opened. This is especially important if your new refrigerator is adjacent to a corner.



Kieffer's Buying Guide: Refrigeration

Space: How Much Do You Have?

When Designing a New Kitchen



How much space in your new kitchen will you dedicate to refrigeration?

Keep in mind the height of the refrigerator. New construction accounts for a refrigerator space of 36-inches wide and 72-inches tall. It's important to be mindful of your available height when shopping for a refrigerator.

The most common refrigerator widths are: 24-, 30-, 36-, 42-, 48-, 60-, and 72-inches.

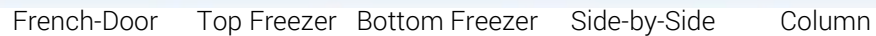
Smaller refrigerators are designed to fit within spaces that vary in widths (15-, 24-, 30-, and 36-inches).

Some things to keep in mind when designing a new kitchen:

- Using undercounter refrigeration, such as a beverage center or wine storage, will free up about 20% of your refrigerator.
- Every inch that you allocate for a new refrigerator could be used in counter space.
- The average family refrigerator is 18-22 cubic feet. The average apartment-size refrigerator is 14-16 cubic feet.



Designer Tip: Counter depth refrigerators should be considered in any kitchen remodel because they will complement the kitchen design and won't get in the way.

[illegible]

Freestanding refrigerators, with their finished sides, are designed to stand in any kind of setting. Whether inside a larger set of cabinetry or standing alone in the kitchen, freestanding fridges are not designed to blend into your décor. In fact, if you placed them into standard cabinetry, they would protrude at least five inches. Not a desirable look.



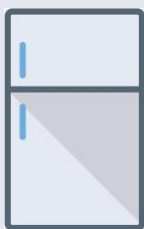
- 
- KIEFFER'S**
APPLIANCES



Your Notes Here

-

Kieffer's Buying Guide: Refrigeration



Your Notes Here

[illegible]

Integrated Column Refrigerators

Fully integrated columns blend impeccably with the rest of the décor. Not only do they sit fully flush into the cabinetry, they can be outfitted with panels that match the rest of the kitchen, allowing for a clean, continuous look. Another advantage of built-in columns is that the refrigerator and freezer do not have to be installed directly adjacent to each other, which adds flexibility in the kitchen's design.

- Width: Between 18- and 36-inches. (Up to 66-inches when paired with a freezer column.)
- Height: 84-inches.
- Colors: Black, White, Stainless Steel, and custom panels.
- Popular Brands: Sub-Zero, Thermador, Miele, etc.



Refrigerator Styles

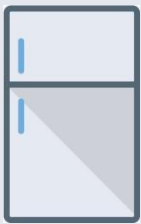
When it comes to style, there are four options. Each has its own advantages and drawbacks. Choosing the style of the refrigerator will depend on your needs and desired features. Keep in mind that not every type of refrigerator will be available in every style.

Top-Freezer Refrigerators

When someone says “fridge”, people typically think of this style with the freezer compartment at the top. On average, the top-freezer refrigerator is the most cost effective out of all the style options.

- Widths: Between 21- and 32-inches.
- Heights: Up to 75-inches.
- Colors: Stainless steel, white, black, bisque.
- Hinging: Available in models that open to the left or right side.
- Dispenser: Very few models.
- Capacity: Up to 20 cubic feet
- Popular Brands: KitchenAid, GE, Whirlpool, Frigidaire, Bosch, Maytag, etc.





Your Notes Here

- ## Refrigerator Styles (continued)

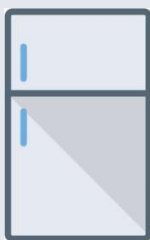
Bottom-Freezer Refrigerators

Bottom-freezer refrigerators are designed almost exactly like the top-freezer models, but reversed. The freezer is a drawer that pulls out that gives access to your frozen foods. These are versatile refrigerators that can be used in almost any application.

- Types Available: Standard, Counter-Depth, Freestanding, and Built-In.
- Widths: Between 19- and 36-inches.
- Heights: Up to 84-inches.
- Colors: Stainless steel, black, white.
- Hinging: Available in left-or right-side hinge.
- Dispenser: Rarely available.
- Capacity: Up to 24 cubic feet.
- Popular Brands: KitchenAid, GE, Whirlpool, Frigidaire, Bosch, Maytag, etc.



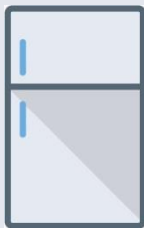
KIEFFER'S
APPLIANCES



Your Notes Here

- Types available: Standard, counter-depth, freestanding, and built-in.
- Widths: Between 30- and 72-inches.
- Heights: Up to 84-inches.
- Colors: Stainless steel, black, white, and panel.
- Hinging: Non-adjustable, due to dual-side design.
- Dispenser: Most have an external water dispenser.
- Capacity: Up to 30 cubic feet.
- Popular Brands: GE, Bosch, Frigidaire, KitchenAid, Whirlpool, etc.





Your Notes Here

Refrigerator Styles (continued)

French-Door Refrigerators

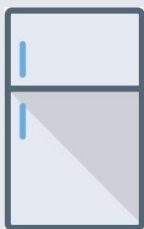
The current favorite is the French door refrigerator. These models feature a freezer drawer at the bottom and are available in counter- and standard-depths.

- Types available: Standard, counter-depth, and built-in.
- Widths: Between 29- and 42-inches.
- Heights: Up to 84-inches.
- Colors: Stainless steel, black, white, and panel options.
- Hinging: Non-adjustable, due to split-door design.
- Dispenser: Available with internal, external, or no water dispensers.
- Capacity: Up to 30 cubic feet.
- Popular Brands: Sub-Zero, Bosch, KitchenAid, Electrolux, GE, Whirlpool, etc.



KIEFFER'S
APPLIANCES

Kieffer's Buying Guide: Refrigeration



Your Notes Here

Refrigerator Styles: Comparison

	Pros	Cons	Cost
Top-Freezers	Budget-friendly.	No water dispensers available on top freezers.	1
Bottom-Freezers	Easy access to refrigerator, as it is at eye level.	Freezer is at the bottom of the unit. Some may find this inconvenient, as it requires bending down to access freezer.	2
Side-by-Side	Both freezer and refrigerator occupy the full height of the unit, giving easy access to both.	Smaller capacity in each side. (think of putting a pizza box in there)	3
French Door	Large capacity for the width. Full-width shelves with eye-level reach. (think pizza boxes)	Freezer is located at bottom of unit, requiring you to bend down to reach contents. Also, freezer has a smaller capacity when compared to other models.	4
Columns	Freezer and refrigerator are separate units. They do not have to be installed adjacently, which allows for a wide array of design possibilities.	Water/ice dispensers are not available on columns (very few exceptions).	5



French-Door



Top Freezer



Bottom Freezer



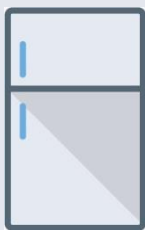
Side-by-Side



Column

KIEFFER'S
APPLIANCES

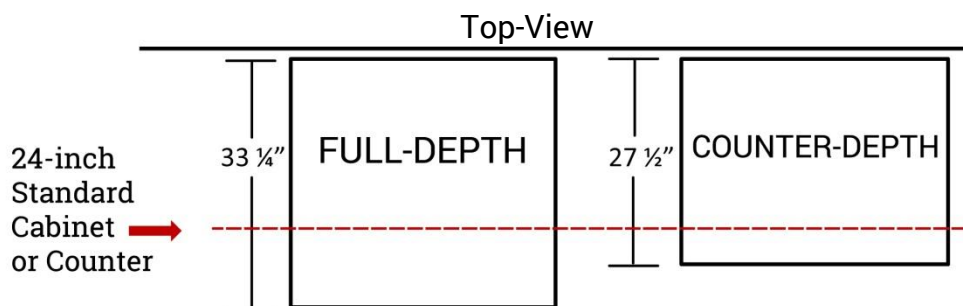
Kieffer's Buying Guide: Refrigeration



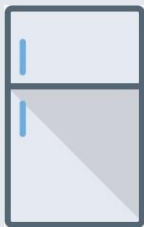
Your Notes Here

Full-Depth vs. Counter-Depth: Comparison

	Pros	Cons
Counter-Depth Refrigerators	<ul style="list-style-type: none"> • Unobtrusive design. • Will not block traffic or impede workflow in the kitchen. 	<ul style="list-style-type: none"> • Slightly smaller capacity. • If equipped with a dispenser, the mechanism inside the refrigerator will take up space, decreasing capacity.
Full-Depth Refrigerators	<ul style="list-style-type: none"> • Slightly larger capacity. • Available in all finishes such as black, white, stainless steel, and bisque. • Budget-friendly. 	<ul style="list-style-type: none"> • Due to their bulkiness, full-depth refrigerators take up counter space as well as floor space. • Neighboring appliances will be blocked due to protrusion. • Workflow and traffic will be less manageable.



KIEFFER'S
APPLIANCES



Your Notes Here

Ice and Water Dispensers

Dispensers are available on many refrigerators and are a convenient way to access water and ice; however, it's important to keep in mind some things when considering a refrigerator with a built-in dispenser:

- If equipped with a dispenser, the mechanism inside the refrigerator will take up space, decreasing capacity inside the refrigerator.
- Some external dispensers are bulky and may hinder your refrigerator door's ability to open all the way.
- Refrigerators with dispensers will require a water line, which needs additional plumbing work during installation.
- Internal water dispensers do not occupy any internal capacity, but require the door to be open during use.



Refrigerator Features

Much like other appliances, refrigerators get their own share of bells and whistles. While features affect the price of a refrigerator, they add convenience and efficiency to your kitchen experience. Here are a few of the most important features to look out for when shopping.

- LED lighting that emits very little heat and is more energy-efficient.
- Specialty shelves, such as adjustable and pull-out shelves.
- Humidity-controlled drawers for fruits and veggies.
- Dual evaporators that provide optimum temperatures.
- Touchscreen-enabled dispensers that are easy to see and use.
- “Door Ajar” alarms.
- Air & Water filtration
- Dual Ice Makers

Based on your lifestyle, determine if these features are important to you, and mention them to your Kieffer's salesperson, as they will affect your options.





Bonus Section: Undercounter Refrigerators

Undercounter Refrigeration

Compact refrigeration is a helpful addition to any kitchen. Install locations include a home bar, office, or media room as extra cooling space for beverages and small foods. Some manufacturers even offer panel-ready models that are set up for complete integration.

Undercounter refrigerators, such as freezers, wine storage, and ice makers, are very different from freestanding refrigerators. They vent air through the front below the door so they can be placed between cabinets without compressor malfunctions.

Popular Brands:
Sub-Zero, Perlick, U-Line,
and Marvel.



Undercounter Refrigerator Drawers

Double-Refrigerator Drawers are extremely versatile and sophisticated, and offer handy storage for snacks and beverages. Great for entertaining, they can be installed in standard cabinetry, perfect for the kitchen or anywhere in the home.

